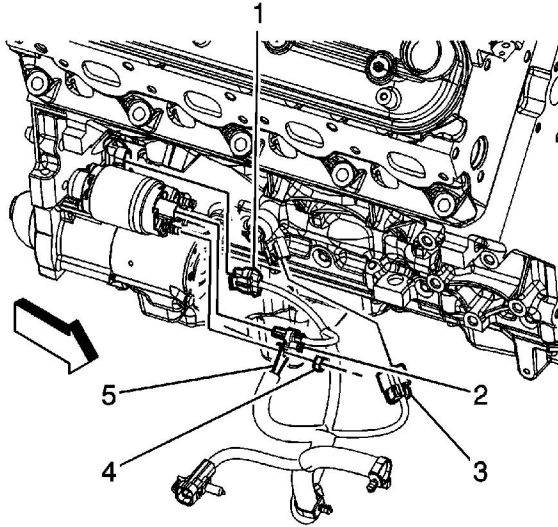
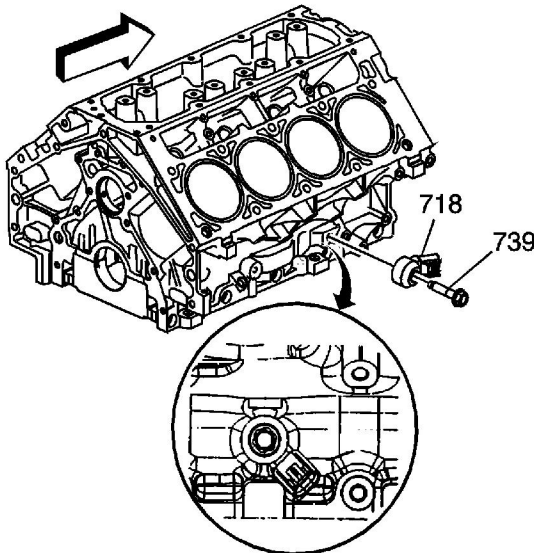


Knock Sensor 2 Replacement

Removal Procedure



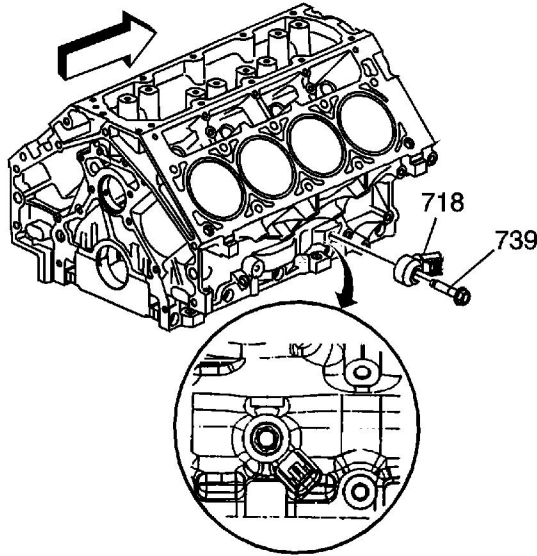
1. Raise and suitably support the vehicle. Refer to [Lifting and Jacking the Vehicle](#).
2. Disconnect the engine wiring harness electrical connector (3) from the knock sensor.



3. Remove the knock sensor bolt (739) and sensor (718).

Installation Procedure

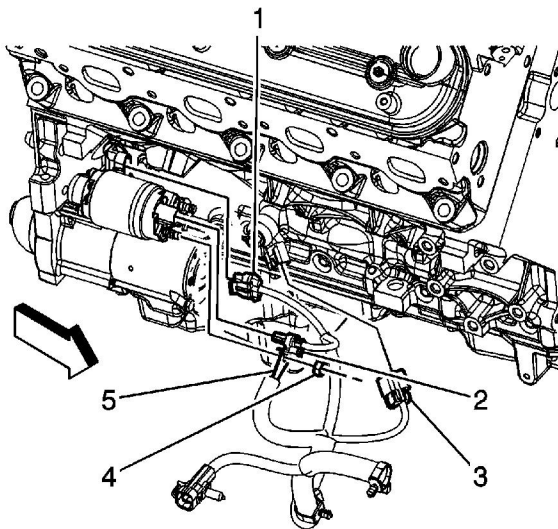
Notice: Refer to [Fastener Notice](#) in the Preface section.



1. Position the knock sensor (718) to the engine block and install the bolt (739).

Tighten

Tighten the bolt to 20 N·m (15 lb ft).



2. Connect the engine wiring harness electrical connector (3) to the knock sensor.

3. Lower the vehicle.